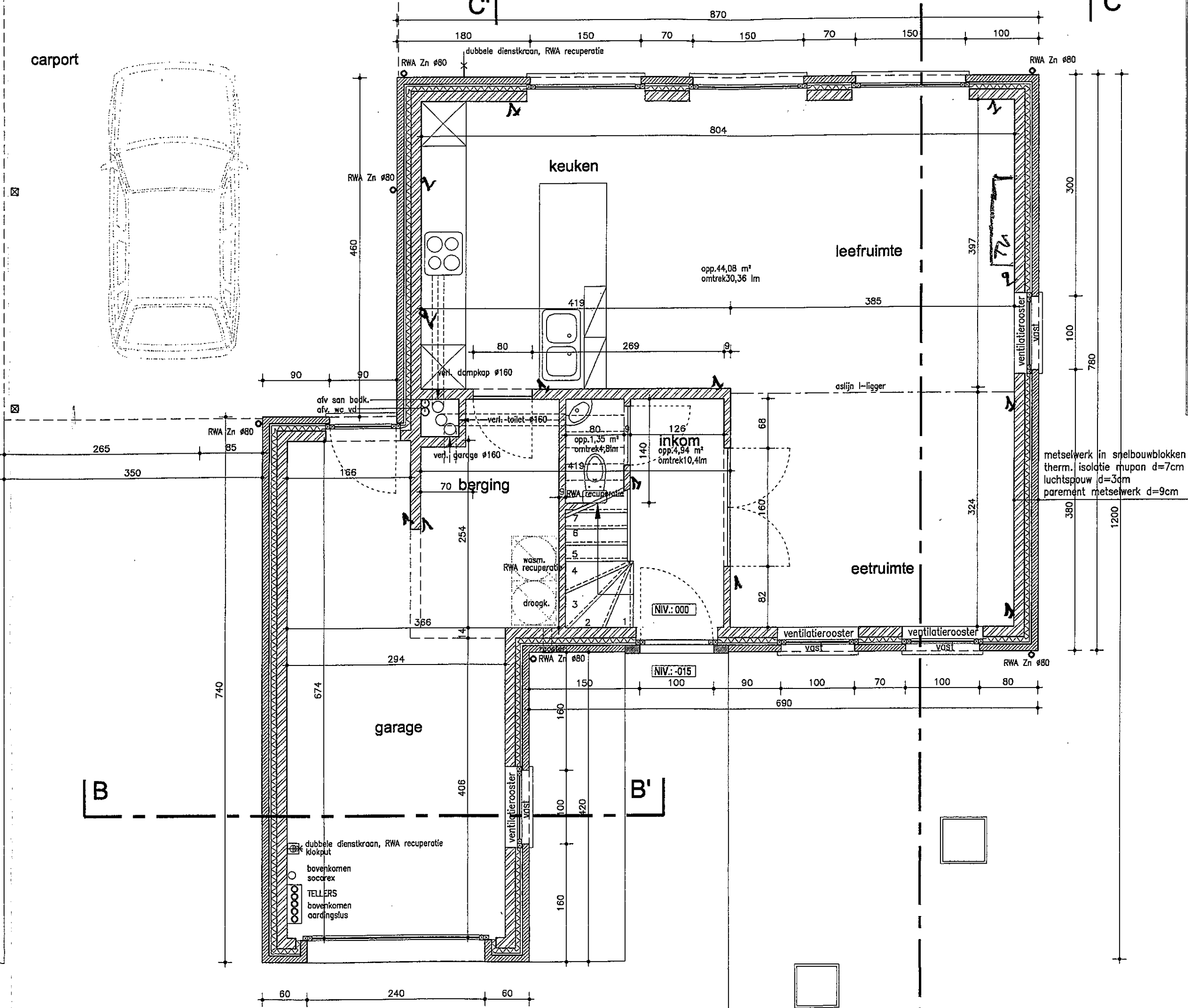
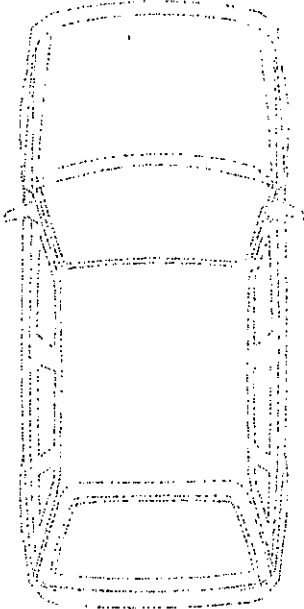
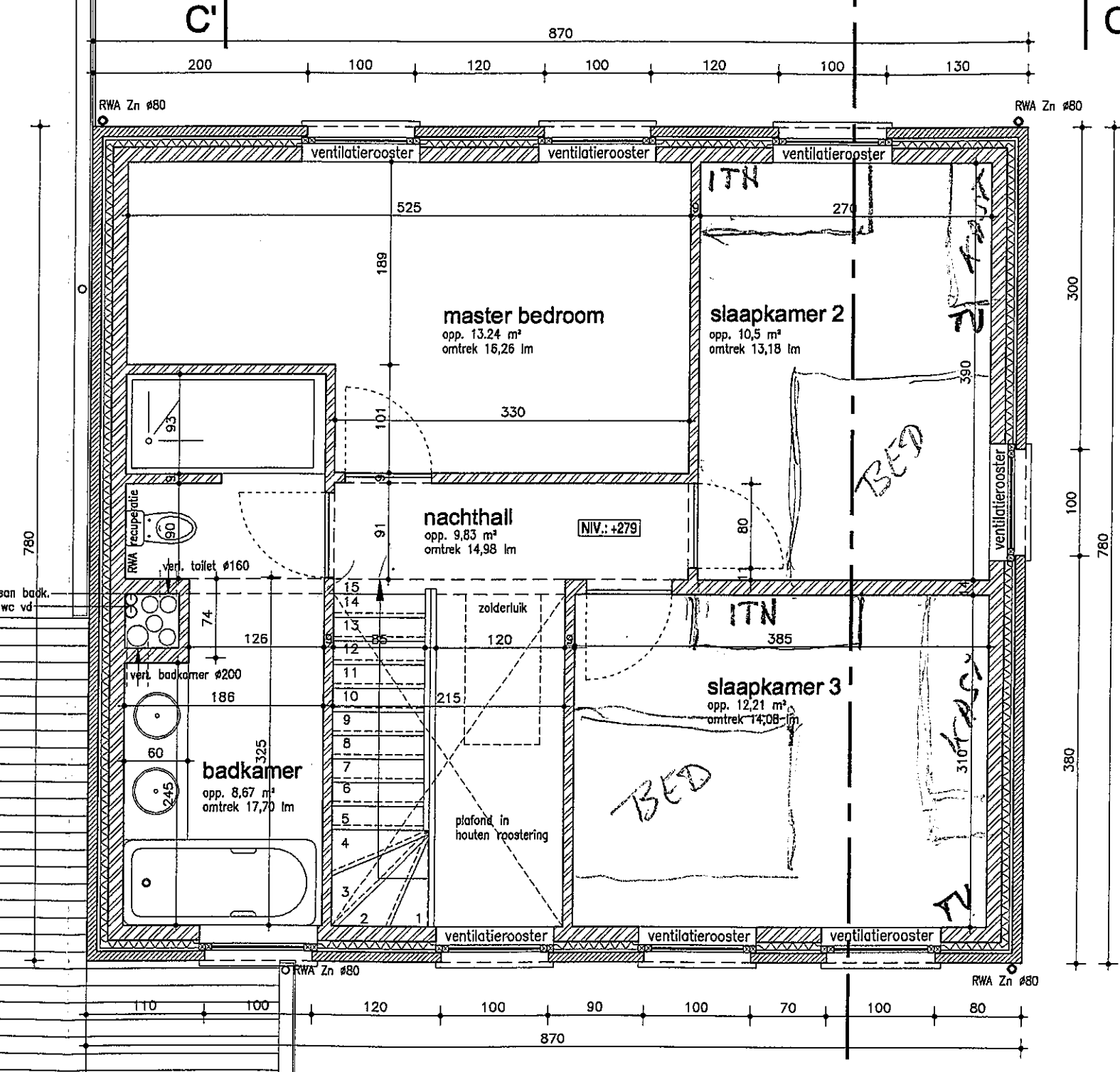


carport





C'

870

200 100 120 100 120 100 130

RWA Zn #80

RWA Zn #80

ventilatioerooster

ventilatioerooster

ventilatioerooster

525

ITN

270

189

**master bedroom**

opp. 13,24 m<sup>2</sup>  
omtrek 16,26 lm

**slaapkamer 2**

opp. 10,5 m<sup>2</sup>  
omtrek 13,18 lm

ITN

BED

ventilatioerooster

330

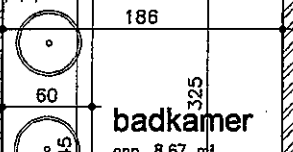
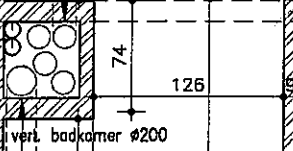
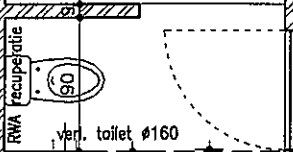
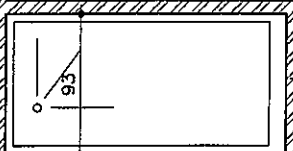
101

**nachthall**

opp. 9,83 m<sup>2</sup>  
omtrek 14,98 lm

NIV.: +279

80



**badkamer**

opp. 8,67 m<sup>2</sup>  
omtrek 17,70 lm

zolderluik

120

ITN

385

**slaapkamer 3**

opp. 12,21 m<sup>2</sup>  
omtrek 14,08 lm

BED

ITN

plafond in houten roostering

ventilatioerooster

ventilatioerooster

ventilatioerooster

RWA Zn #80

RWA Zn #80

110 100 120 100 90 100 70 100 80

870

780

300

100

780

380

san bak.  
wc vd

93

90

ver. toilet ø160

126

186

60

245

325

15  
14  
13  
12  
11  
10  
9  
8  
7  
6  
5  
4  
3  
2  
1

91

15

14

13

12

11

10

9

8

7

6

5

4

3

2

1

215

80

80

80

80

80

80

80

80

80

80

80

80

80

80

80

80

80

80

80

80

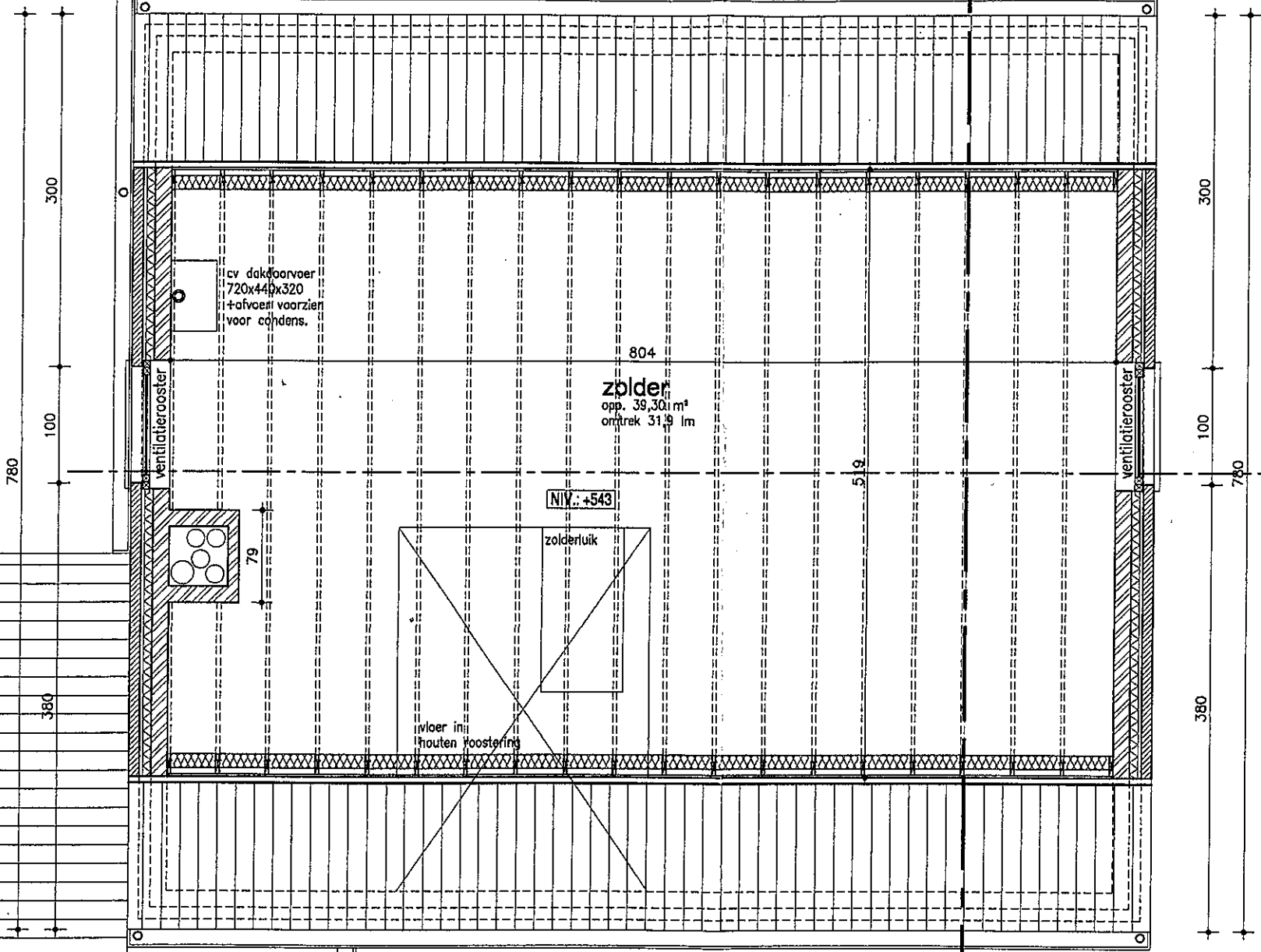
80

80

80

C'

870



cv dakvoorvoer  
720x440x320  
+afvoert voorzien  
voor condens.

804  
**zolder**  
opp. 39,30 m<sup>2</sup>  
omtrek 31,9 m

NIV.: +543

zolderluik

vloer in  
houten voering

ventilatierooster

ventilatierooster

nok

780

300

100

380

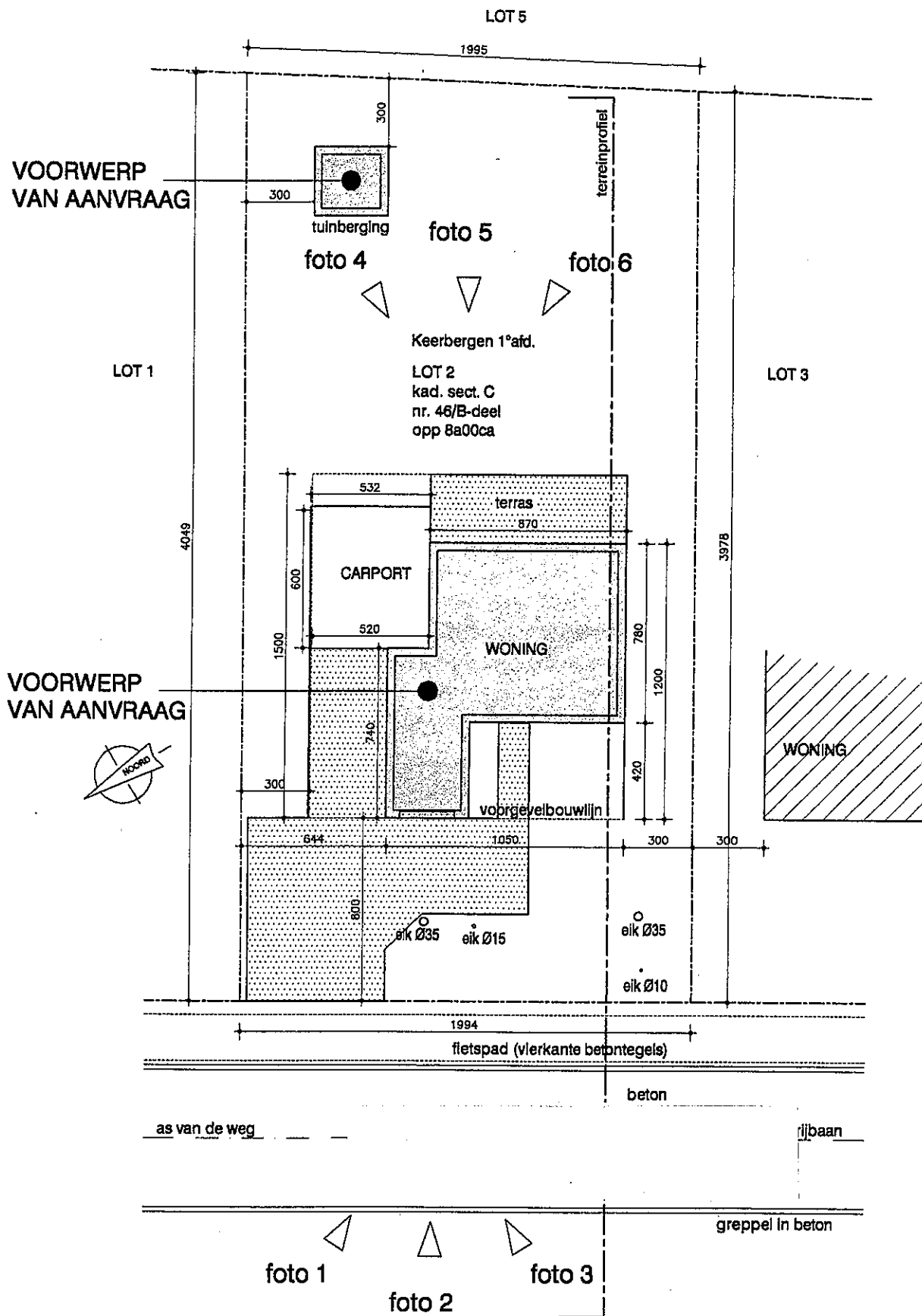
300

100

380

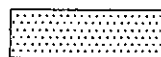
780

518



# INPLANTING 1/250

geen erfdienstbaarheden aanwezig  
nutsvoorzieningen aanwezig (gas, water, elec en distributie)



inrit in waterdoorlatende verharding